



# Supporting Minnesota Agriculture

## Minnesota Farm Bureau Foundation Board of Directors

President.....	Dan Glessing
Vice President .....	Carolyn Olson
Secretary .....	Karin Schaefer
Treasurer.....	Dave Johnson
District 1 .....	Jeff Pagel
District 2 .....	Robert Roelofs
District 3 .....	Peter Bakken
District 4.....	Nathan Collins
District 5 .....	Fran Miron
District 6.....	Miles Kuschel
District 7 .....	Vacant
Promotion & Education Chair.....	Steve Schoenfeld
Young Farmers & Ranchers Chair .....	Jessie Bester

## Minnesota Farm Bureau Federation Staff

### Foundation

Foundation Director..... Ruth Meirick

### Administration and Finance

Executive Director..... Karin Schaefer  
 Director of Operations..... Dave Johnson  
 Business Manager..... Alex Yang

### Communications and Leadership Development

Director of Communications..... Rachel Reisig  
 Communications Specialist..... Emma LeBerthon  
 Education Coordinator..... Pam Debele  
 Leadership Coordinator..... Rachael Peterson

### Membership and Marketing

Director of Member Relations..... Robin Kinney  
 Director of Member Engagement..... Dennis Sabel  
 Northeast Region Specialist..... James Dodds  
 Southeast Region Specialist..... Virginia Magyar  
 Northwest Region Specialist..... Kayla Mystic  
 Southwest Region Specialist..... Amanda Revier

### Public Policy

Director of Public Policy..... Loren Dauer  
 Public Policy Specialist..... Hunter Pederson



Dear Friends,

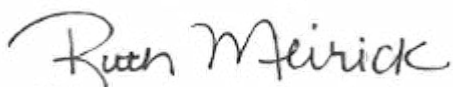
The Minnesota Farm Bureau Foundation plays an essential role in connecting our state's residents to agriculture. As more people become disconnected from farming and ranching, it is essential that we remain committed to our mission. To make these important connections, the Foundation developed a platform that offers a range of programs that align with the interests of our supporters.

Despite the challenges we face, the generosity of our supporters enables us to provide valuable resources, programs, and activities. Through collaborative efforts with various organizations that advocate for Minnesota's farmers and ranchers, we are able to offer year-round educational programming that advances our mission.

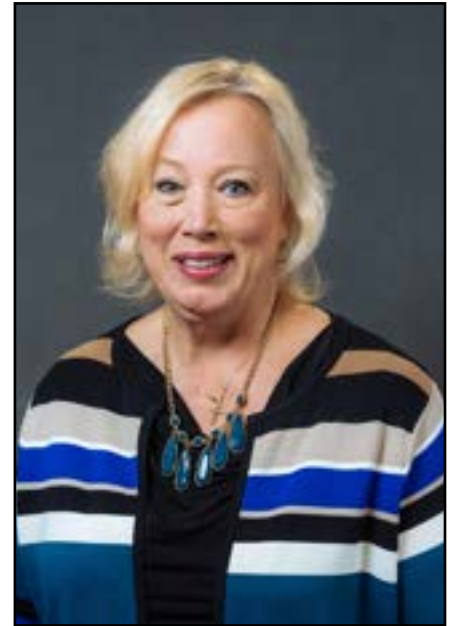
The Foundation is dedicated to fostering young leaders, promoting health and wellness programs, and enhancing agricultural literacy. Our goal is to inspire curiosity and engagement with agriculture. When you contribute to the Foundation, you can trust that your gift will be used for its intended purpose and will align with your values.

Thank you for your continued support of the Foundation. We are grateful for your trust and generosity, which make our work possible.

Sincerely,

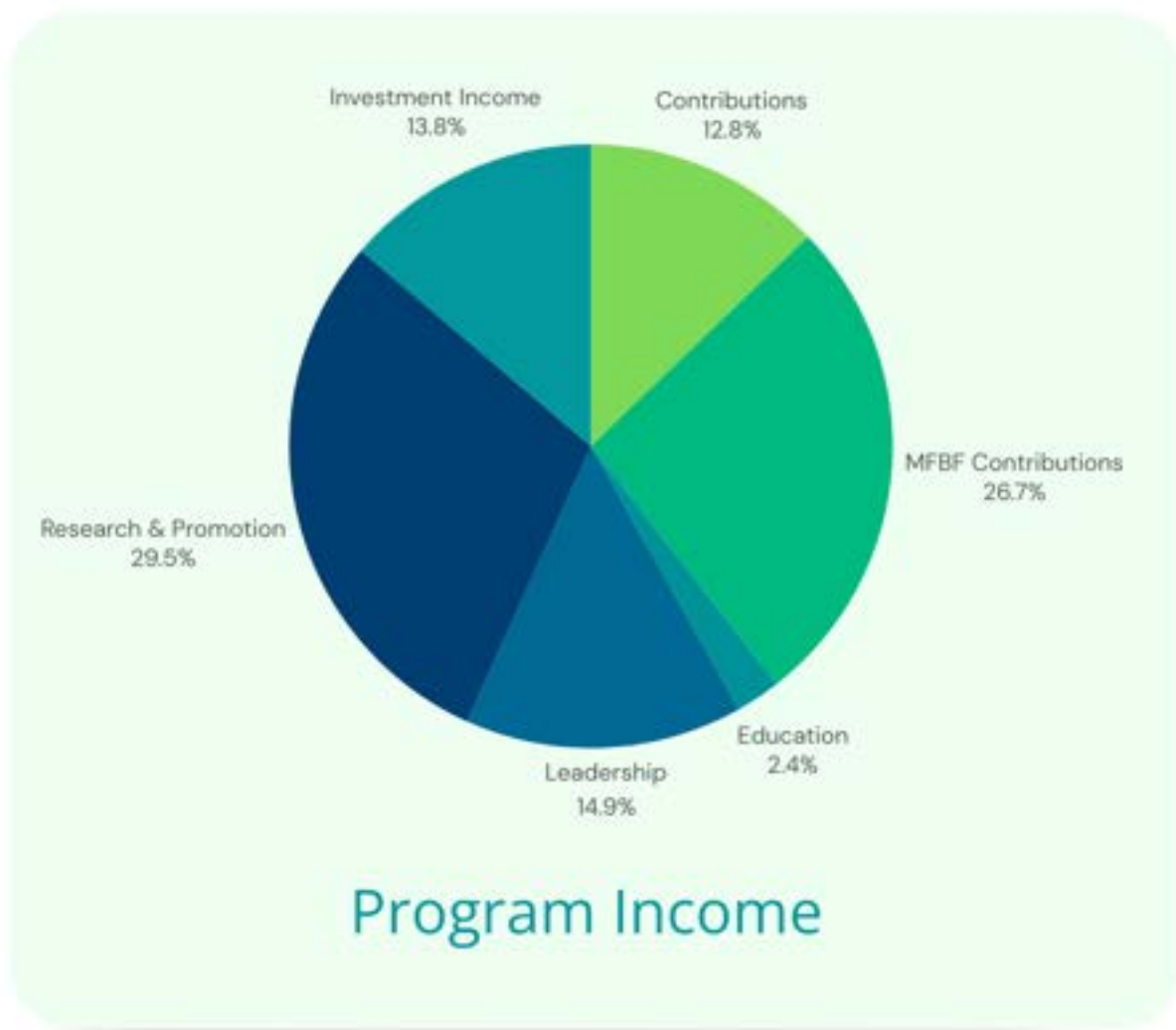


Ruth Meirick  
Director

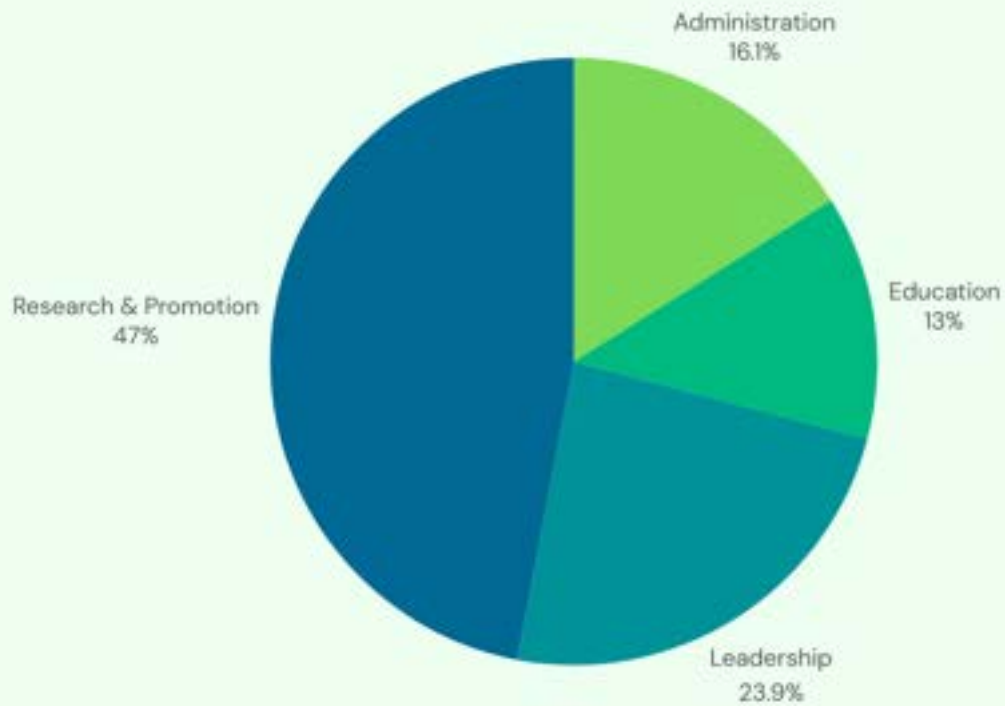


## Financials - Income

---



<b>\$160,505</b>	Funding for research and promotional efforts
<b>\$145,000</b>	Contributions from the Minnesota Farm Bureau Federation
<b>\$80,938</b>	Funding for leadership programming efforts
<b>\$74,773</b>	Income from financial investments
<b>\$69,493</b>	Contributions from our supporters across the state
<b>\$12,800</b>	Funding to support educational efforts
<hr/>	
<b>\$543,509</b>	Total Income



## Program Services

<b>\$219,473</b>	Research and promotional outreach
<b>\$111,640</b>	Leadership outreach
<b>\$75,220</b>	Administrative expenses
<b>\$60,485</b>	Educational outreach
<hr/>	
<b>\$466,818</b>	Total expenses

## Activities and Events

The Foundation is proud to host a variety of activities and events throughout the year, bringing together farmers and supporters in bolstering its mission.

### Ag Day Gala



### Foundation Fun Night



### Farmfest



## Golf Scramble



## LEAP Conference



## Minnesota State Fair



## New Look

---

### Minnesota Farm Bureau Foundation transitions into the Minnesota Foundation for Agriculture

In an effort to grow and better serve the agriculture community across the state, over the past year the Minnesota Farm Bureau Foundation conducted a deep-dive evaluation of its current structure, programming and other organizational details.

As a part of this effort, a peer review committee formed by other state Farm Bureau leaders reviewed documents, publications, financial statements, and board reports. They also held multiple interviews with staff, MFBF board members, county leaders, donors and others in the agriculture community. Their goal was to help identify strengths as well as possible areas of improvement.

The peer review found that the Minnesota Farm Bureau Foundation was a strong and thriving organization with impressive programming and accomplishments.

With a strong foundation already established, it was recommended to make a few changes to further bolster the visibility and outreach of the Foundation to help it grow for years to come. Those changes include:

- A name change from the Minnesota Farm Bureau Foundation to the Minnesota Foundation for Agriculture (MFA)
- Updating and filing the Articles of Incorporation and organizational bylaws with the Secretary of State
- Forming a new Board of Directors which incorporates agriculture industry members
- Improving staff support

In the upcoming months, MFA staff will work to develop a strategic plan that puts the Foundation on the path of success. This will allow the organization continued growth, stronger donor and supporter relationships and expanded programming to support the Foundation's mission.

The Foundation's future is bright, and the board and staff look forward to continuing to think outside the box to develop connections that advance the purpose, mission and goals.



**Minnesota**  
Foundation  
for Agriculture



## Supporting Agriculture

American Farm Bureau Foundation for Agriculture  
Farm in the Dell  
Farmamerica  
Gopher Dairy Club  
Mayo Clinic Alix School of Medicine  
Minnesota 4-H Dairy Showcase  
Minnesota 4-H Foundation  
Minnesota Ag in the Classroom  
Minnesota Agri-Women  
Minnesota Agriculture & Rural Leadership Program (MARL)  
Minnesota Association of Agriculture Educators  
Minnesota Beef Expo  
Minnesota County Farm Bureau Ag Promotion Grants  
Minnesota Farm Bureau 1st Aid/Mental Health Kit Project  
Minnesota Farm Bureau Ag Transportation Handbook Project  
Minnesota Farm Bureau LEAP Conference  
Minnesota FFA Foundation  
Minnesota Holstein Association  
Minnesota Royal  
Minnesota Youth Livestock Expo  
Minnesota State Fair  
Morrison County Health & Human Services  
Prior to the Plate  
South Dakota State University Dairy Club  
University of Minnesota CFANS Alumni Society  
University of Wisconsin River Falls Dairy Club  
Women's Agriculture Leadership Conference  
Young Leaders in Agriculture Conference  
Zumbro Valley Medical Society

The Foundation is a proud sponsor of programming across the state that works to support and advance agriculture and rural communities



69

Organizations  
received funding  
from the  
Foundation

83

Counties were  
reached through  
Foundation  
programming

34

Speaking  
engagements and  
events featured  
Foundation  
leadership

## Scholarship Recipients

---

### Paul Stark Memorial Scholarship

The Paul Stark Memorial Scholarship is awarded annually to deserving freshmen or sophomore students enrolled at an accredited college or vocational technical school and pursuing a degree in an agriculture, conservation or forestry-related field.



**Natalie Neumann**  
Wright County



**Katie Radman**  
Dakota County

### Al Christopherson Scholarship

The Al Christopherson Scholarship is awarded annually to deserving junior, senior or graduate students enrolled at an accredited college or vocational technical school and pursuing a degree in an agriculture, conservation or forestry-related field.



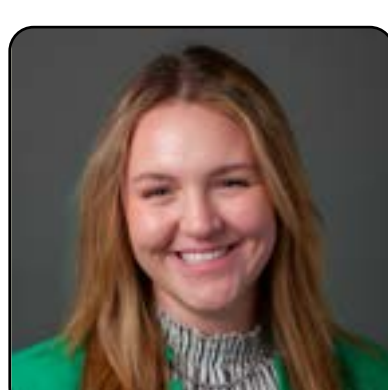
**Theresa Gustafson**  
Beltrami County



**Lily Krona**  
Beltrami County



**Megan Ratka**  
Stearns County



**Kestlyn Willert**  
Washington/Ramsey  
County

Addressing the issues facing rural healthcare in Minnesota is a priority as the Foundation and many others look to support farmers, ranchers and rural communities.

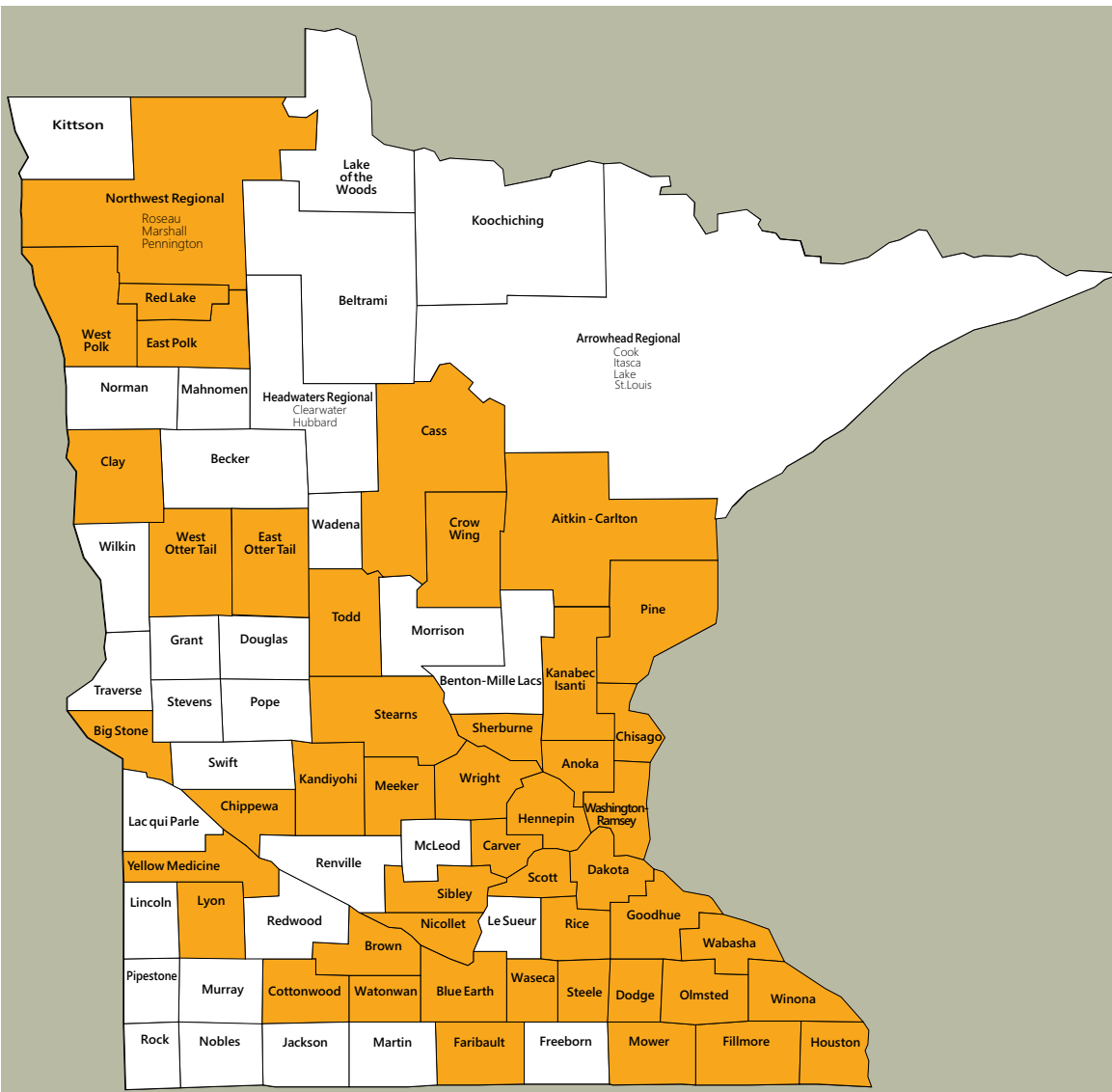
This past year, Dodge County Farm Bureau President Jim Checkel and Houston County Farm Bureau board member Cynthia Christensen created an educational opportunity for first-year Mayo medical students that allowed them an intimate perspective on what farmers and ranchers face daily. This included a field trip along with panel discussion where they were joined by fellow Olmsted County Farm Bureau members Ron Pagel and Michelle Rossman.

The seminar was so well received that Mayo leaders are hoping to grow the experience to a year-long program which will expose students to the “seasons” of farming and the challenges that go along with it. It will also allow students the opportunity to learn how to build relationships and trust with farmers and ranchers and understand the day-to-day working of life in our rural communities.

The Minnesota Farm Bureau Foundation saw tremendous value and has donated \$5,000 to the Zumbro Valley Medical Society. Funds from the Minnesota Farm Bureau Foundation will be used to introduce students to rural medicine and have a discussion on rural health issues. Topics will include financial and logistical challenges in rural health care delivery, rural health care accessibility, occupational exposures and injuries in agriculture, the rural mental health crisis, and more.

“We are grateful for volunteer leaders who are willing to go the extra mile and think outside the box on programming,” stated Ruth Meirick, Foundation Director. “Because of the work of our county Farm Bureau leadership, a door was opened to an audience who wants to grow their understanding of the agriculture business and we are excited to continue to support, develop and expand opportunities into the future.”





County Board Challenge



### County Board Challenge

The annual County Board Challenge encourages county and regional Farm Bureaus to support the Foundation by giving a gift of \$10 per board member.

Thank you to our 2024 participant counties: Aitkin-Carlton, Anoka, Big Stone, Blue Earth, Brown, Carver, Cass, Chippewa, Chisago, Clay, Cottonwood, Crow Wing, Dakota, Dodge, East Otter Tail, East Polk, Faribault, Fillmore, Goodhue, Hennepin, Houston, Kanabec/Isanti, Kandiyohi, Lyon, Meeker, Mower, Nicollet, Northwest Regional, Olmsted, Pine, Rice, Scott, Sherburne, Sibley, Stearns, Steele, Todd, Wabasha, Waseca, Washington/Ramsey, Watonwan, West Otter Tail, West Polk, Winona, Wright, and Yellow Medicine.

### Ag Promotion Grants

Ag Promotion Grants, funded by the Foundation, are designed to support the work of county Farm Bureaus and their local outreach efforts. In 2024, the Foundation awarded more than \$31,850 for farm safety, education, leadership and other county-driven efforts.

The Anoka County Farm Bureau leveraged its ag promotion grant to give back to the next generation. The Anoka County Farm Bureau used its grant funds to financially support the newly organized St. Francis FFA chapter by providing money to purchase FFA jackets and support for members to attend the State FFA Convention. The relationship continued throughout the year as they also supported the chapter's Agriculture Day by purchasing Casey & Friends activity books to distribute to attendees for free. Additionally, Anoka County Farm Bureau continued its efforts to distribute accurate agriculture books to local schools and the community through little free libraries and other avenues around the county.



Some of the biggest impact is made by county Farm Bureaus, giving back to their communities in a variety of ways.

## With Gratitude

---

Thank you for your support of this year's Falcon Premier Sale! Because of your contribution our club was able to put on a great sale and grow as a club! We greatly appreciate your support and cannot thank you enough!

*Sincerely,  
UWRF Dairy Club and Falcon Premier  
Sale Committee*

Thank you for awarding me the Paul Stark Memorial Scholarship. I am excited to use it to help finance my education at the University of Minnesota in the animal science and agricultural communications and marketing fields.

*Thank you once again,  
Katie Radman*

Thank you for your support to the FFA. I appreciate your efforts to help provide opportunities to students. I really enjoyed participating in extemporaneous speaking this year and I look forward to doing it again next year. Thank again for your sponsorship!

*Sincerely,  
Kelcie Kuschel  
Sebeka FFA*

Thank you for sponsoring the banner for Intermediate Reserve Champion Showmanship. Showing is one of my favorite things to do. Your generosity of donating the banner is greatly appreciated. Thank you again!

*Sincerely,  
Brynlee Koenigs*

Thank you for your generosity towards the Minnesota 4-H Dairy Showcase and support for my project. This is my 10th year showing dairy and I was honored to finish 13th in the showcase. Your support will allow me to continue my involvement with the dairy project.

*Thank you,  
Kayla Visser*

I want to extend the 2024 Ag Ed cohorts' appreciation of you supporting and being a STAR partner through the Minnesota FFA Foundation. Student teaching has been such a rewarding experience, and I am so thankful to have such a large crowd of support.

*Thank you again,  
Kelsey Biel, U of M 2024 Cohort*

Thank you for sponsorship of the FFA Discussion Meet and the award scholarship. I plan to use the money to further my education. I hope the skills that I have gained through this competition will help me to continue to promote agriculture.

*Thanks again,  
Henry Lemke, Eden Valley Watkins FFA*

Thank you for providing the educational resources for the May Event attendees. Thank you for sponsoring the children's books that were given to us. We will use them at our future classroom visits. We appreciate your support of the Dairy Princess Program!

*Sincerely,  
Minnesota Dairy Princesses and  
Ambassadors*

## With Gratitude

---

Thank you to our generous donors who help make our programming possible.

### **Benefactor's Society**

Platinum: \$10,000 or greater

Compeer Financial  
FBL Financial Group, Inc.  
Hormel Foods  
Minnesota Corn Growers Association  
Minnesota Farm Bureau Federation  
Starkey - Start Hearing

### **Patron Society**

Diamond: \$5,000-\$9,999

Ag Management Solutions  
AgCountry Farm Credit Services  
Midwest Dairy Association  
Red River Valley Sugarbeet Growers Association  
Syngenta

Emerald: \$2,500-\$4,999

Christensen Farms  
Coreteva Agriscience  
Enbridge  
GRAIL, Inc.  
Kowalski's Companies  
Minnesota Pork Board  
Jonathan & Carolyn Olson  
RD Offutt Farms Co.  
Brandon Sawalich  
University of Minnesota

Ruby: \$1,000-\$2,499

Arthur Chapman Kettering Smetak & Pikala, PA  
Allan Baer  
Bayer  
Chisago County Farm Bureau  
Al & Diane Christopherson  
Compart Family Farms  
Kevin Dahlman  
Funky Chunky, Inc.  
Dan & Seena Glessing  
IDEAg Group, LLC.  
Shayne & Denise Isane  
JonnyPops  
Meeker County Farm Bureau  
Ruth Meirick  
Brent & Emily Mohn  
Ron & Judy Nelson  
Blois Olson  
O'Shaughnessy Distilling Co.  
Matt & Karin Schaefer  
Stearns County Farm Bureau  
Swanson Meats  
Washington/Ramsey County Farm Bureau

### **Contributor's Society**

Gold: \$500-\$999

Associated Milk Producers, Inc.  
Peter & Ann Marie Ward Bakken  
Cass County Farm Bureau  
Chippewa County Farm Bureau  
Clay County Farm Bureau  
David & Cindy Durheim  
Ellingson Drainage  
Farm Gate Consulting  
Fresha Produce  
Dave & Amy Johnson  
Jason and Caitlin Keck  
Robin E. Kinney  
Miles & Sarah Kuschel  
Len Busch Roses  
Local Roots Ag LLC  
Minnesota AgriGrowth Council  
Minnesota Bio-Fuels Association  
Minnesota State Fair Foundation  
Fran & Mary Ann Miron  
Olmsted County Farm Bureau  
Jeff & Chandra Pagel  
Pure Prairie Poultry Inc.  
Todd Stadtler  
Stevens County Farm Bureau  
Joe & April Sullivan  
Jacob Tintes  
Scott & Jean Winslow

Silver: \$250-499

Bruce & Kim Brenden  
C & B John Deere  
Dakota County Farm Bureau  
Fast Seed & Precision LLC  
Geislinger Insurance Services  
Paul Hanson  
Haycreek Ag Services  
Kandiyohi County Farm Bureau  
Larry & Sharon Larson  
Legend Seeds, Inc.  
Mark & Cindy Maiers  
Mark and Mary Davis Foundation  
Kevin Meyer  
Mid-American Catastrophe Services  
Minnesota FFA Foundation  
Barry & Sandra Nelson  
Nicollet County Farm Bureau  
George & Mary Peichel  
John & Rachael Peterson  
Charles & Leah Radman  
Redhead Creamery  
Steve Schoenfeld  
SERVPRO  
Wilkin County Farm Bureau  
Wright County Farm Bureau



**Bronze: \$100-\$249**

Kyle Acker  
Aitkin-Carlton County Farm Bureau  
Anoka County Farm Bureau  
Gregory & Mary Bartz  
Trent & Ashle Benson  
Benton/Mille Lacs County Farm Bureau  
Jessie Bester  
Big Stone County Farm Bureau  
John & Janet Bremer  
James Checkel  
Dean & Carol Christopherson  
Cody's Country Meats  
Nathan & Jessi Collins  
Amanda & Adam Cook  
Crow Wing County Farm Bureau  
Jeff & Pam Debele  
Dodge County Farm Bureau  
Douglas County Farm Bureau  
East Otter Tail County Farm Bureau  
Jason & Didi Edwards  
Emerald Nuts  
Charles & Yvonne Erickson  
Faribault County Farm Bureau  
Fillmore County Farm Bureau  
Goodhue County Farm Bureau  
Glen & Valree Graff  
Grant County Farm Bureau  
Mike & Connie Gunderson  
Heart O'Lakes Meats  
Vernon & Dorothy Hedlin  
Hennepin County Farm Bureau  
Chad Hoffbeck  
Jackson County Farm Bureau  
Kanabec/Isanti County Farm Bureau  
Glen & Gail Kaschmitter  
Tanya Keppler  
Amber Knettel  
Martha Koehl  
Koochiching County Farm Bureau  
Lake of the Wood County Farm Bureau  
Lincoln County Farm Bureau  
Lyon County Farm Bureau  
Martin County Farm Bureau  
Ron Mead  
Minnesota Association of Wheat Growers  
Minnesota State Cattlemen's Assn  
Matthew and Natasha Mortenson  
Brian & Jill Nelson  
Steve Olson  
Bennett Osmonson  
Kevin & Julie Paap  
Ron & Lori Pagel  
Tom & Kim Perkins  
Phillips Distilling  
Prairie Farms Dairy, Inc.  
Red River Farm Network  
Dan & Rachel Reisig  
Revol Greens  
Jeremy & Kari Rupp

Dennis & Kathryn Sabel  
Nathan & Loy Sahr  
Johnathan & Katie Saterbak  
Roger & Linda Sauerbrey  
Gary & Tina Schoenfeld  
Darren & Corey Scott  
Robert & Rebecca Shepard  
Lucas & Alise Sjostrom  
Sleepy Buffalo Acres  
James Solum  
Southern Minnesota Beet Sugar Cooperative  
Sparboe Companies  
Spring Grove Soda Pop, Inc.  
St. Josephs Meats  
Adam & Ashley Tabberson  
Bruce & Ann Tiffany  
Todd County Farm Bureau  
University of Minnesota Extension  
University of Minnesota Meat Lab  
Watonwan County Farm Bureau  
Barb Weckman Brekke  
Steve & Deb Weiber  
West Central Initiative Trust (Riverview LLP)  
West Otter Tail County Farm Bureau  
Stanley & Linda Whitney  
Winona County Farm Bureau  
Yellow Medicine County Farm Bureau



Friends of the Foundation: \$5-\$99

Keith & Lori Aakre  
Donald Albrecht  
John & Rose Appel  
Susie Arndt  
Arrowhead Area Regional Farm Bureau  
Alan & Bethany Barka  
Pierce Bennett  
Blue Earth County Farm Bureau  
Brown County Farm Bureau  
Carver County Farm Bureau  
Paul & Anna Chapman  
Cottonwood County Farm Bureau  
Justin & Katie Crowley  
Lance & Rachel Daberkow  
Tony Dahlman  
Luke Daninger  
James & Missy Dodds  
Nathan & Katie Drewitz  
Dean & Jane Duesterhoeft  
East Polk County Farm Bureau  
David & Deborah Engelbrecht  
Marlin Fay  
Richard & Claire Field  
Ronald & Beverly Frank  
Stacy Fritz  
Jeremy Geske  
John Jr. & Shelley Gilbertson  
Scott & Amber Glaeser  
Cora Glessing  
Sharon Glessing  
Eric & Rosemary Gustafson  
Randy & Lori Hanson  
Nic Hassebroek  
Houston County Farm Bureau  
Elijah Hysten  
David & Lori Joachim  
Marvin Johnson  
Troy & Alexis Klassen  
Dan & Tiffany Kobbermann  
Shantel Koering  
Steven & Rebecca Kruse  
Judy Kryzer  
Mike & Shirley Kuechle  
Richard & Eileen Leino  
Shawn & Heather Lindula  
Dan & Kim Lippert  
Shaun & Virginia Magyar  
Tyann Marcy  
David & Julie Marquardt  
Douglas & Talana Mathiowetz  
McLeod County Farm Bureau  
Clayton Mielke  
Minneapolis Marriott Southwest  
Michael & Severine Miron  
Tyler & Kayla Mystic  
Eric & Alaina Mousel  
Mower County Farm Bureau  
Tyler & Cailyn Nelson  
Northwest Regional Farm Bureau

William & Julie Olen  
Doug Olinger  
Ollie Grace Cookie Company  
Pine County Farm Bureau  
Daniel & Jessica Pumper  
Joe Ramstad  
Juanita Reed-Boniface  
Rice County Farm Bureau  
David & Karen Richter  
Jim Sam  
Mark Sandager  
Ritchie Schaefer  
Howard & Mary Jo Schoenfeld  
Doug & Judy Schultz  
Scott County Farm Bureau  
Tony & Chantelle Seykora  
Sherburne County Farm Bureau  
Sibley County Farm Bureau  
Wanda Stark  
Steele County Farm Bureau  
Mark & Patricia Stevens  
Gwen Swenson  
Garth & Lois Symington  
Paul & Cindy Torkelson  
Pam Uhlenkamp  
Wabasha County Farm Bureau  
Waseca County Farm Bureau  
West Polk County Farm Bureau  
Charlie Westfall  
Dustin & Katie Wiese  
Klint & April Willert  
Jonathan & Jill Zieroth



## **Foundation Memorials**

The following gifts were made in memoriam of family and friends that passed away last year.

### **Virginia "Ginny" Anderson**

Greg and Mary Bartz, Robin Kinney, Ruth Meirick

### **Michael Bissen**

Ruth Meirick

### **John Conzemius**

Dakota County Farm Bureau

### **Warren Fay**

Dodge County Farm Bureau, Richard and Claire Field, Ronald and Beverly Frank, Ruth Meirick

### **Diane Fay**

Ruth Meirick

### **Allen Glessing**

Sharon Glessing

### **DelRay Johnson**

Robin Kinney, Ruth Meirick, Fran and Mary Ann Miron, Dennis and Kathryn Sabel

### **Glynis Raye Kuehne**

Ruth Meirick, Fran and Mary Ann Miron

### **Gloria Hermann Manning**

Ruth Meirick, Fran and Mary Ann Miron

### **Gloria Osmonson**

Greg and Mary Bartz

### **Harold Peterson**

Chippewa County Farm Bureau, Al and Diane Christopherson, Robin Kinney, Wanda Stark

### **Harlan and Nancy Radman**

Dakota County Farm Bureau, Fran and Mary Ann Miron, Dennis and Kathryn Sabel

### **Claire Steng**

Greg and Mary Bartz

### **Howard Swenson**

Greg and Mary Bartz, Nicollet County Farm Bureau, David and Karen Richter

### **Darlene Tesch**

Robin Kinney

### **Eldon Tessman**

Fran and Mary Ann Miron

### **Cassian Torkelson**

Ruth Meirick

### **Teri Woodford**

Ruth Meirick

## **Foundation Honorariums**

The following gifts were made in honor of family and friends and their achievement last year.

### **Deb White, in honor of her retirement from Farm Bureau Financial Services**

Robin Kinney

## What is your legacy?

The Minnesota Foundation for Agriculture is dedicated to connecting consumers to farmers and serving rural communities through its outreach and education programming. There are several ways to make a tax-deductible contribution to the Foundation in support of its work:

- Endowments
- Event Sponsorships
- Gifts of Grain
- Giving Tree
- Memorials or Tributes
- Outright Gifts
- Planned or Estate Giving

For more information, contact Foundation Director Ruth Meirick, [ruth.meirick@fbmn.org](mailto:ruth.meirick@fbmn.org) or 651-768-2115



# Minnesota Foundation for Agriculture